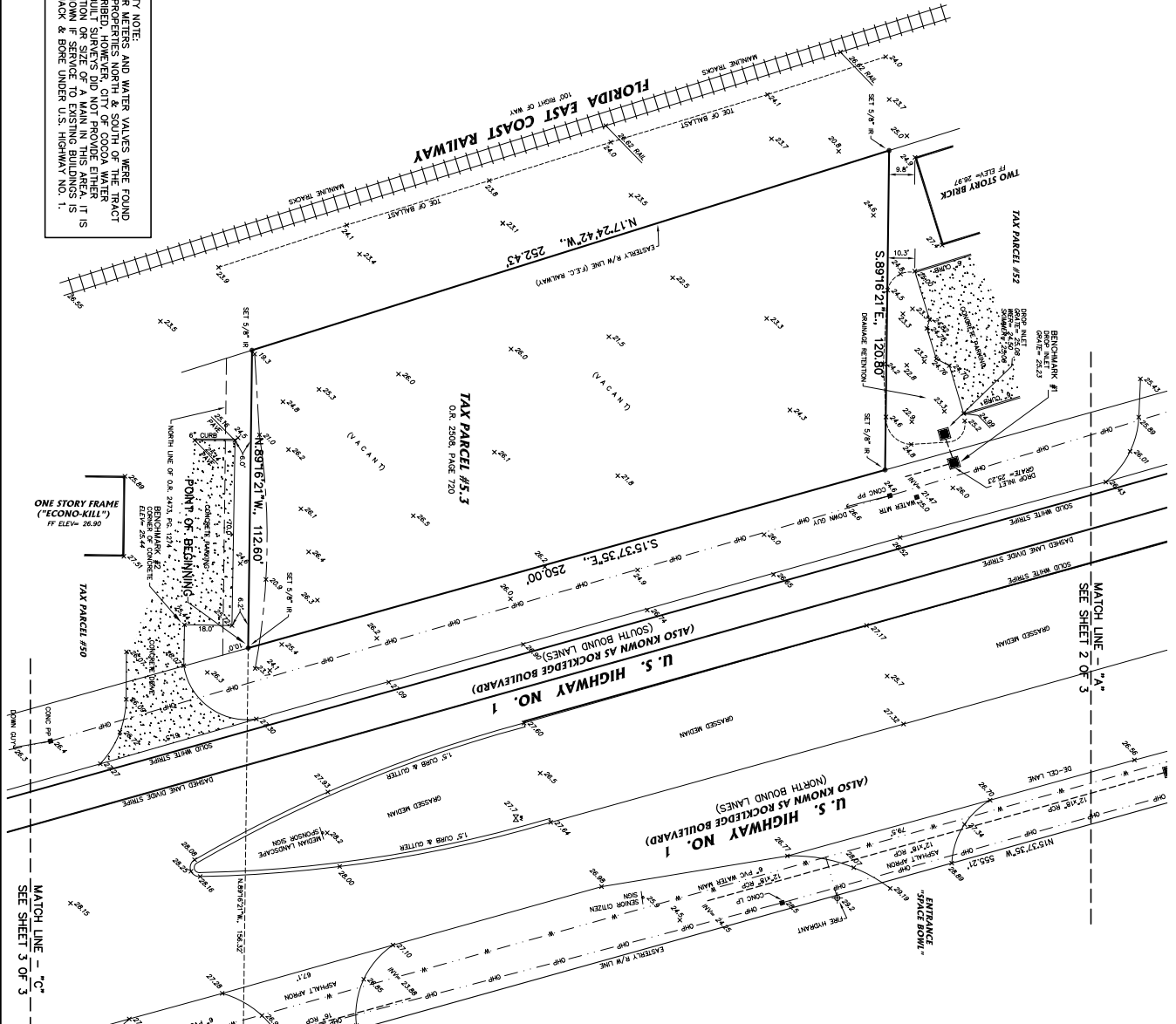


SKETCH OF SURVEY



UTILITY NOTE:  
 WATER METERS AND WATER VALVES WERE FOUND FOR PROPERTIES NORTH & SOUTH OF THE TRACT DESCRIBED HEREIN. THE LOCATION OF THESE AS-BUILT SURVEYS DID NOT PROVIDE EITHER LOCATION OR SIZE OF A MAIN IN THIS AREA. IT IS UNKNOWN IF SERVICE TO EXISTING BUILDINGS IS VIA JACK & BONE UNDER U.S. HIGHWAY NO. 1.

DESCRIPTION (AS FURNISHED):  
 A PARCEL OF LAND LYING IN SECTION 4, TOWNSHIP 25 SOUTH, RANGE 36 EAST, BREVARD COUNTY, FLORIDA, BEING MORE FULLY DESCRIBED AS FOLLOWS:  
 COMMENCE AT THE INTERSECTION OF THE SOUTH RIGHT OF WAY LINE OF BOULGAMILLA DRIVE AND THE EASTERN RIGHT OF WAY LINE OF U.S. HIGHWAY NO. 1, THENCE S1537.35°E, ALONG SAID EASTERN RIGHT OF WAY LINE, A DISTANCE OF 555.21 FEET TO THE POINT OF BEGINNING; THENCE N49°00'00"W, 435.00 FEET TO THE WESTERLY CORNER OF PARCEL #52; THENCE N89°16'21"W, 120.80 FEET TO THE POINT OF BEGINNING OF THE LANDS DESCRIBED; THENCE CONVEY TO THE POINT OF BEGINNING OF THE LANDS DESCRIBED; THENCE S1537.35°E, ALONG SAID EASTERN RIGHT OF WAY LINE OF U.S. HIGHWAY NO. 1, A DISTANCE OF 252.43 FEET; THENCE N1724.42°W, ALONG SAID EASTERN RIGHT OF WAY LINE OF U.S. HIGHWAY NO. 1, A DISTANCE OF 120.80 FEET TO A POINT ON THE EASTERN RIGHT OF WAY LINE OF U.S. HIGHWAY NO. 1, THENCE S89°16'21"E, ALONG SAID WESTERLY RIGHT OF WAY LINE, A DISTANCE OF 250.00 FEET TO THE POINT OF BEGINNING.

- SURVEY NOTES:
- 1) THE BEARING STRUCTURE OF THIS SURVEY IS BASED ON THE DEED DESCRIPTION FURNISHED. SPECIFICALLY, THE WESTERLY RIGHT OF WAY LINE OF U.S. HIGHWAY NO. 1 = A BEARING OF S1537.35°E.
  - 2) THE ELEVATIONS DEPICTED ARE EXISTING AND BASED ON NATIONAL GEODETIC VERTICAL DATUM OF 1928. PROJECT BENCHMARKS ARE AS DEPICTED.
  - 3) THE WATER MAIN SIZE AND LOCATION WAS FURNISHED BY THE CITY OF COCOA PUBLIC WORKS DEPARTMENT.
  - 4) THIS SURVEY WAS PREPARED WITHOUT BENEFIT OF A CURRENT TITLE POLICY AND SUBJECT TO ALL EASEMENTS, RESTRICTIONS, LIMITATIONS AND / OR RIGHTS OF ANY OF RECORD.

GENERAL NOTES:  
 A) CORNER / POINTS RECORDED AS "P" REPRESENT THEM AS THEY WERE FOUND OR AS THEY WERE SHOWN "P" OR "L" AS SHOWN.  
 B) ALL DISTANCES ARE IN FEET AND DECIMALS THEREOF. ALL ANGLES ARE IN DEGREES, MINUTES AND SECONDS. ALL BEARINGS ARE TRUE BEARINGS UNLESS OTHERWISE NOTED. ALL BEARINGS ARE TRUE BEARINGS UNLESS OTHERWISE NOTED.  
 C) ALL DISTANCES ARE IN FEET AND DECIMALS THEREOF. ALL ANGLES ARE IN DEGREES, MINUTES AND SECONDS. ALL BEARINGS ARE TRUE BEARINGS UNLESS OTHERWISE NOTED. ALL BEARINGS ARE TRUE BEARINGS UNLESS OTHERWISE NOTED.  
 D) ALL DISTANCES ARE IN FEET AND DECIMALS THEREOF. ALL ANGLES ARE IN DEGREES, MINUTES AND SECONDS. ALL BEARINGS ARE TRUE BEARINGS UNLESS OTHERWISE NOTED. ALL BEARINGS ARE TRUE BEARINGS UNLESS OTHERWISE NOTED.  
 E) ALL DISTANCES ARE IN FEET AND DECIMALS THEREOF. ALL ANGLES ARE IN DEGREES, MINUTES AND SECONDS. ALL BEARINGS ARE TRUE BEARINGS UNLESS OTHERWISE NOTED. ALL BEARINGS ARE TRUE BEARINGS UNLESS OTHERWISE NOTED.  
 F) ALL DISTANCES ARE IN FEET AND DECIMALS THEREOF. ALL ANGLES ARE IN DEGREES, MINUTES AND SECONDS. ALL BEARINGS ARE TRUE BEARINGS UNLESS OTHERWISE NOTED. ALL BEARINGS ARE TRUE BEARINGS UNLESS OTHERWISE NOTED.  
 G) ALL DISTANCES ARE IN FEET AND DECIMALS THEREOF. ALL ANGLES ARE IN DEGREES, MINUTES AND SECONDS. ALL BEARINGS ARE TRUE BEARINGS UNLESS OTHERWISE NOTED. ALL BEARINGS ARE TRUE BEARINGS UNLESS OTHERWISE NOTED.  
 H) ALL DISTANCES ARE IN FEET AND DECIMALS THEREOF. ALL ANGLES ARE IN DEGREES, MINUTES AND SECONDS. ALL BEARINGS ARE TRUE BEARINGS UNLESS OTHERWISE NOTED. ALL BEARINGS ARE TRUE BEARINGS UNLESS OTHERWISE NOTED.  
 I) ALL DISTANCES ARE IN FEET AND DECIMALS THEREOF. ALL ANGLES ARE IN DEGREES, MINUTES AND SECONDS. ALL BEARINGS ARE TRUE BEARINGS UNLESS OTHERWISE NOTED. ALL BEARINGS ARE TRUE BEARINGS UNLESS OTHERWISE NOTED.  
 J) ALL DISTANCES ARE IN FEET AND DECIMALS THEREOF. ALL ANGLES ARE IN DEGREES, MINUTES AND SECONDS. ALL BEARINGS ARE TRUE BEARINGS UNLESS OTHERWISE NOTED. ALL BEARINGS ARE TRUE BEARINGS UNLESS OTHERWISE NOTED.  
 K) ALL DISTANCES ARE IN FEET AND DECIMALS THEREOF. ALL ANGLES ARE IN DEGREES, MINUTES AND SECONDS. ALL BEARINGS ARE TRUE BEARINGS UNLESS OTHERWISE NOTED. ALL BEARINGS ARE TRUE BEARINGS UNLESS OTHERWISE NOTED.  
 L) ALL DISTANCES ARE IN FEET AND DECIMALS THEREOF. ALL ANGLES ARE IN DEGREES, MINUTES AND SECONDS. ALL BEARINGS ARE TRUE BEARINGS UNLESS OTHERWISE NOTED. ALL BEARINGS ARE TRUE BEARINGS UNLESS OTHERWISE NOTED.  
 M) ALL DISTANCES ARE IN FEET AND DECIMALS THEREOF. ALL ANGLES ARE IN DEGREES, MINUTES AND SECONDS. ALL BEARINGS ARE TRUE BEARINGS UNLESS OTHERWISE NOTED. ALL BEARINGS ARE TRUE BEARINGS UNLESS OTHERWISE NOTED.  
 N) ALL DISTANCES ARE IN FEET AND DECIMALS THEREOF. ALL ANGLES ARE IN DEGREES, MINUTES AND SECONDS. ALL BEARINGS ARE TRUE BEARINGS UNLESS OTHERWISE NOTED. ALL BEARINGS ARE TRUE BEARINGS UNLESS OTHERWISE NOTED.  
 O) ALL DISTANCES ARE IN FEET AND DECIMALS THEREOF. ALL ANGLES ARE IN DEGREES, MINUTES AND SECONDS. ALL BEARINGS ARE TRUE BEARINGS UNLESS OTHERWISE NOTED. ALL BEARINGS ARE TRUE BEARINGS UNLESS OTHERWISE NOTED.  
 P) ALL DISTANCES ARE IN FEET AND DECIMALS THEREOF. ALL ANGLES ARE IN DEGREES, MINUTES AND SECONDS. ALL BEARINGS ARE TRUE BEARINGS UNLESS OTHERWISE NOTED. ALL BEARINGS ARE TRUE BEARINGS UNLESS OTHERWISE NOTED.  
 Q) ALL DISTANCES ARE IN FEET AND DECIMALS THEREOF. ALL ANGLES ARE IN DEGREES, MINUTES AND SECONDS. ALL BEARINGS ARE TRUE BEARINGS UNLESS OTHERWISE NOTED. ALL BEARINGS ARE TRUE BEARINGS UNLESS OTHERWISE NOTED.  
 R) ALL DISTANCES ARE IN FEET AND DECIMALS THEREOF. ALL ANGLES ARE IN DEGREES, MINUTES AND SECONDS. ALL BEARINGS ARE TRUE BEARINGS UNLESS OTHERWISE NOTED. ALL BEARINGS ARE TRUE BEARINGS UNLESS OTHERWISE NOTED.  
 S) ALL DISTANCES ARE IN FEET AND DECIMALS THEREOF. ALL ANGLES ARE IN DEGREES, MINUTES AND SECONDS. ALL BEARINGS ARE TRUE BEARINGS UNLESS OTHERWISE NOTED. ALL BEARINGS ARE TRUE BEARINGS UNLESS OTHERWISE NOTED.  
 T) ALL DISTANCES ARE IN FEET AND DECIMALS THEREOF. ALL ANGLES ARE IN DEGREES, MINUTES AND SECONDS. ALL BEARINGS ARE TRUE BEARINGS UNLESS OTHERWISE NOTED. ALL BEARINGS ARE TRUE BEARINGS UNLESS OTHERWISE NOTED.  
 U) ALL DISTANCES ARE IN FEET AND DECIMALS THEREOF. ALL ANGLES ARE IN DEGREES, MINUTES AND SECONDS. ALL BEARINGS ARE TRUE BEARINGS UNLESS OTHERWISE NOTED. ALL BEARINGS ARE TRUE BEARINGS UNLESS OTHERWISE NOTED.  
 V) ALL DISTANCES ARE IN FEET AND DECIMALS THEREOF. ALL ANGLES ARE IN DEGREES, MINUTES AND SECONDS. ALL BEARINGS ARE TRUE BEARINGS UNLESS OTHERWISE NOTED. ALL BEARINGS ARE TRUE BEARINGS UNLESS OTHERWISE NOTED.  
 W) ALL DISTANCES ARE IN FEET AND DECIMALS THEREOF. ALL ANGLES ARE IN DEGREES, MINUTES AND SECONDS. ALL BEARINGS ARE TRUE BEARINGS UNLESS OTHERWISE NOTED. ALL BEARINGS ARE TRUE BEARINGS UNLESS OTHERWISE NOTED.  
 X) ALL DISTANCES ARE IN FEET AND DECIMALS THEREOF. ALL ANGLES ARE IN DEGREES, MINUTES AND SECONDS. ALL BEARINGS ARE TRUE BEARINGS UNLESS OTHERWISE NOTED. ALL BEARINGS ARE TRUE BEARINGS UNLESS OTHERWISE NOTED.  
 Y) ALL DISTANCES ARE IN FEET AND DECIMALS THEREOF. ALL ANGLES ARE IN DEGREES, MINUTES AND SECONDS. ALL BEARINGS ARE TRUE BEARINGS UNLESS OTHERWISE NOTED. ALL BEARINGS ARE TRUE BEARINGS UNLESS OTHERWISE NOTED.  
 Z) ALL DISTANCES ARE IN FEET AND DECIMALS THEREOF. ALL ANGLES ARE IN DEGREES, MINUTES AND SECONDS. ALL BEARINGS ARE TRUE BEARINGS UNLESS OTHERWISE NOTED. ALL BEARINGS ARE TRUE BEARINGS UNLESS OTHERWISE NOTED.



PREPARED FOR AND CERTIFIED TO THE EXCLUSIVE USE OF:  
 BOUNDARY & TOPOGRAPHIC SURVEY FOR:  
 PERRONE PROPERTIES

DRAWN BY: RMP  
 CHECKED BY:  
 DATE: 5/20/05  
 DWG # 05-341  
 NOTES: FLEES  
 JOB #: 05-341  
 SHEET 1 OF 3

**r. m. packard**  
 & assoc., inc.  
 surveying & mapping  
 1013 ROCKLEDGE DRIVE  
 ROCKLEDGE, FLORIDA 32955  
 TEL (321) 633-4335 • FAX (321) 633-4336  
 FLORIDA CORPORATE CERTIFICATE #648

I HEREBY CERTIFY THAT THIS SURVEY WAS PREPARED UNDER MY DIRECTION AND SUPERVISION AND THAT IT MEETS THE MINIMUM TECHNICAL STANDARDS SET FORTH BY THE FLORIDA BOARD OF SURVEYORS AND MAPPERS IN CHAPTER 61B07-22, F.A.C. PURSUANT TO SECTION 61B07-22, FLORIDA STATUTES (SUBJECT TO NOTES).

ROBERT M. PACKARD, F.S.M.  
 REG. FLORIDA SURVEYOR & MAPPER #3867

NOT VALID WITHOUT ORIGINAL SIGNATURE AND EMBOSSED WITH SURVEYOR'S SEAL