


REVISIONS	
DATE	DESCRIPTION

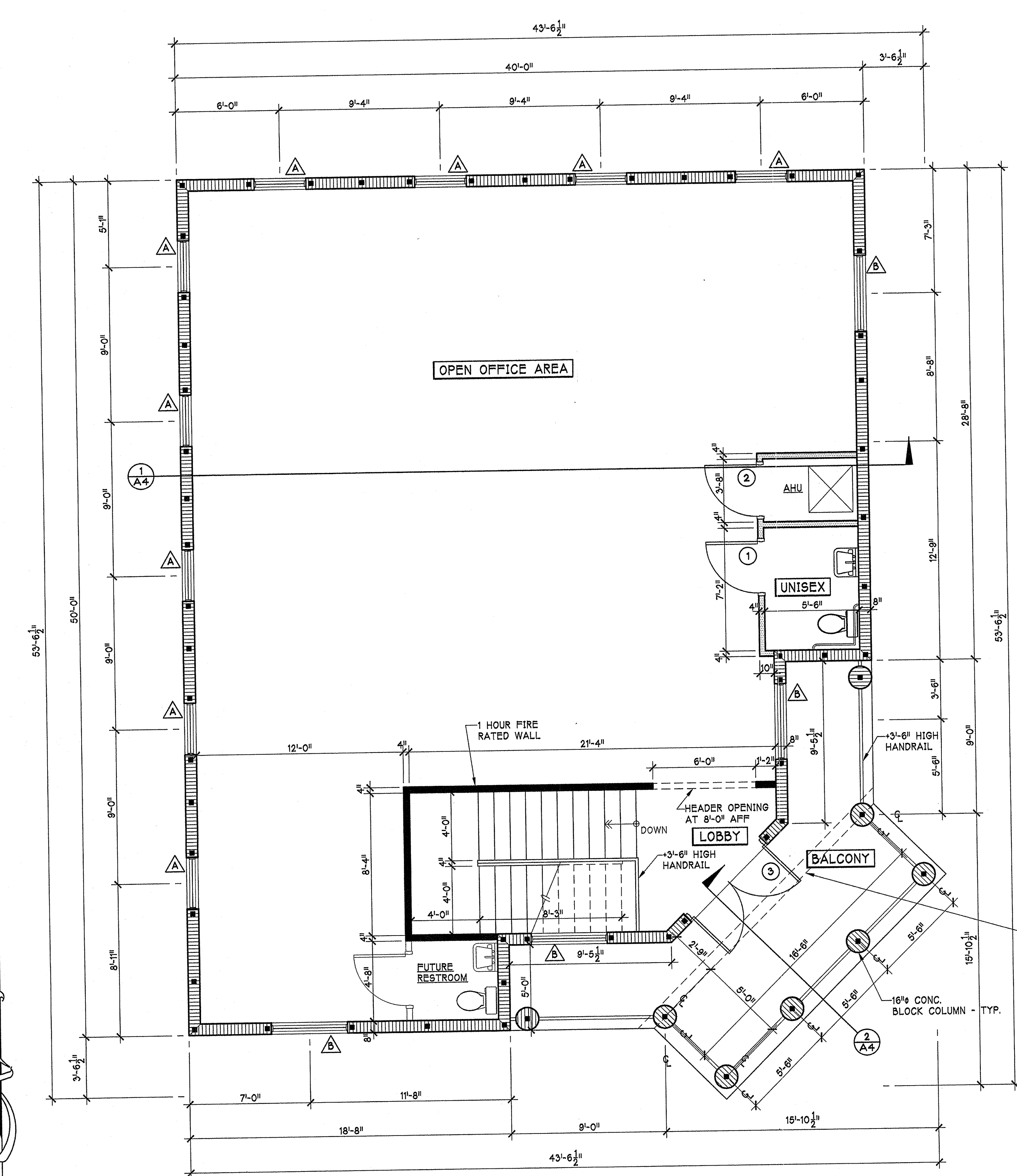
VISLAY ARCHITECTS GROUP, INC.
 655 STATE ROAD 100, SUITE 100
 HERRITT ISLAND, FLORIDA 32953
 PHONE: (407) 463-4780
 FAX: (407) 463-4608



A NEW
2-STORY SHELL BUILDING
 FOR:
PERRONE PROPERTIES
 HERRITT ISLAND, FLORIDA

COPYRIGHT © STATEMENT
 THESE DOCUMENTS AND THEIR CONTENTS ARE THE PROPERTY OF VISLAY ARCHITECTS GROUP, INC. AND ARE ISSUED ONLY FOR THE SPECIFIC PROJECT NOTED ON THESE DOCUMENTS. ANY REVISIONS, REPRODUCTIONS, OR MODIFICATIONS OF THESE DOCUMENTS WITHOUT THE EXPRESS WRITTEN CONSENT OF VAG, INC. IS PROHIBITED BY LAW.

DRAWN
 MRB
 CHECKED
 JRV
 DATE
 6-26-06
 SCALE
 AS NOTED
 JOB NO.
 SHEET
A2
 3 OF 14 SHEETS



SECOND FLOOR PLAN
 SCALE: 1/4" = 1'-0"
 OFFICE AREA = 1,553 S.F. PER FLOOR

WINDOW SCHEDULE						
MK.	SIZE	MATERIAL	TYPE	REMARKS	MAX. POSITIVE PRESSURE (PSF)	MAX. NEGATIVE PRESSURE (PSF)
A	3'-0" X 6'-0"	ALUM. FRAME / TINTED	SH26	SINGLE HUNG	+38.75	-38.45
B	4'-0" X 6'-0"	ALUM. FRAME / TINTED	SH36	SINGLE HUNG	+41.05	-42.30

DOOR SCHEDULE							
MK.	SIZE	FRAME MATERIAL	DOOR MATERIAL	THRESHOLD	FINISH	LOCKSET	REMARKS
1	3'-0" X 8'-0"	WOOD	WOOD	---	PAINTED	PRIVACY	
2	3'-0" X 8'-0"	WOOD	WOOD	---	PAINTED	PASSAGE	
3	2 - 3'-0" X 8'-0"	METAL	GLASS/METAL	ALUMINUM	FACTORY/STOREFRONT	DEAD BOLT	PROVIDE ADA APPROVED HANDLE TYPE KNOB W/ PUSH-PULL HANDLE WITHOUT ANY LATCHING DEVICE.

HARDWARE NOTES

- DOOR HARDWARE:
 - ALL HARDWARE SHALL BE FROM A GOOD QUALITY "COMMERCIAL GRADE" MANUFACTURER.
 - HANDLES, PULLS, AND LATCHES ON ACCESSIBLE DOORS SHALL BE A LEVER TYPE TO CONFORM WITH FLORIDA ACCESSIBILITY CODE, LOCAL CODE REGULATIONS FOR ACCESSIBILITY. MOUNTING HEIGHT SHALL BE NO GREATER THAN 48" ABOVE FINISH FLOOR.
 - ALL LOCKSETS SHALL BE MORTISE TYPE.
 - KEYING CYLINDER LOCKS SHALL BE COORDINATED WITH OWNER.
- THRESHOLDS:
 - THRESHOLDS AT ACCESSIBLE DOORWAYS SHALL NOT EXCEED 1/2" IN HEIGHT. RAISED THRESHOLDS AND FLOOR LEVEL CHANGES AT ACCESSIBLE DOORWAYS SHALL BE BEVELED WITH A SLOPE OF NO GREATER THAN 1:12.
- DOOR CLOSERS:
 - DOOR CLOSERS SHALL CONFORM TO LOCAL CODES AND FLORIDA ACCESSIBILITY REQUIREMENTS. ALL FIRE RATED DOORS TO HAVE SELF CLOSING DEVICES.
- DOOR OPENING FORCE:
 - DOORS SHALL HAVE A MAXIMUM 5 LBS. OF FORCE FOR PUSHING OR PULLING OPEN A DOOR AT ACCESSIBLE OR EXIT DOORS.
- DOOR AND WINDOW SIZES:
 - DOOR AND WINDOW SUPPLIER SHALL FIELD VERIFY ALL OPENINGS BEFORE FABRICATION OF DOORS AND WINDOWS.
- KAWNEER ALUM. DOORS AND WINDOWS:
 - KAWNEER SYSTEM DOORS AND WINDOWS OR APPROVED EQUAL SHALL BE DESIGNED TO PROVIDE A MINIMUM R-30 WIND RESISTANCE FORCE. INSTALLATION SHALL COMPLY WITH MANUFACTURER'S MINIMUM SPECIFICATIONS TO MEET THE R-30 RATING.

INDICATES 8" CONC. BLOCK BEAM AND WALL ABOVE BALCONY. SEE ELEVATIONS AND STRUCTURAL DRAWINGS.

FINISH SCHEDULE						
SPACE	FLOOR	BASE	WALLS	CEILING	CLG. HEIGHT	REMARKS
FIRST FLOOR	CONCRETE	---	DRYWALL W/ PAINT	5/8" D.W.	10'-0"	1 HR. @ TRUSSES
SECOND FLOOR	CONCRETE	---	DRYWALL W/ PAINT	5/8" D.W.	10'-0"	