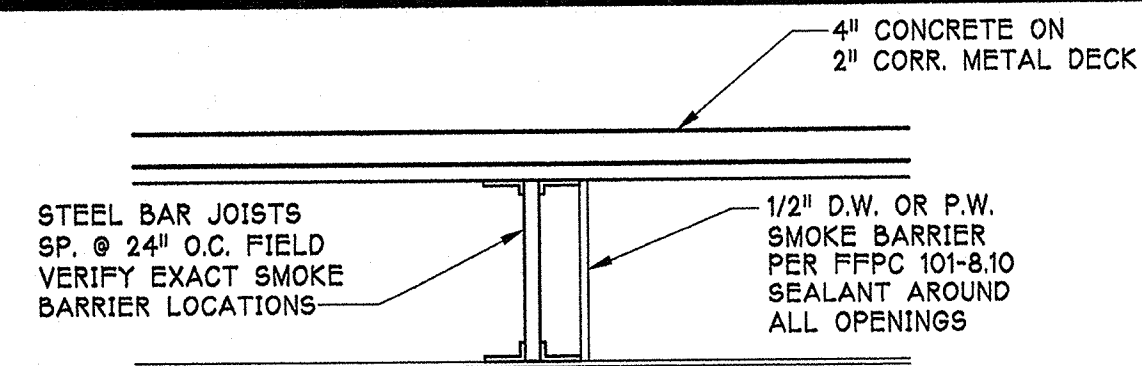


# GENERAL NOTES

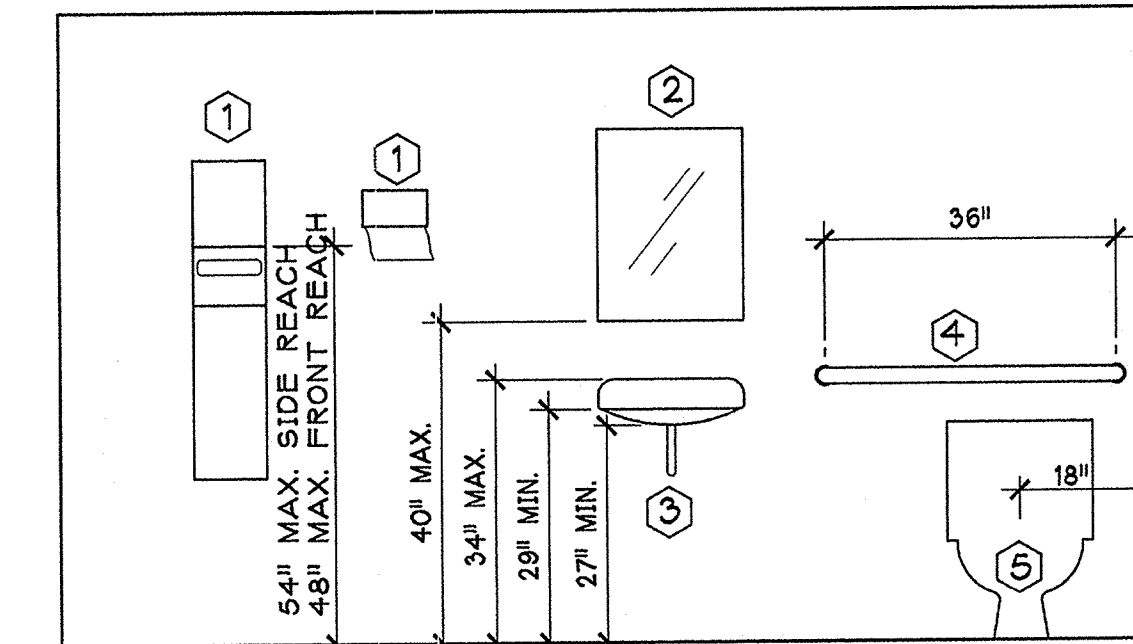
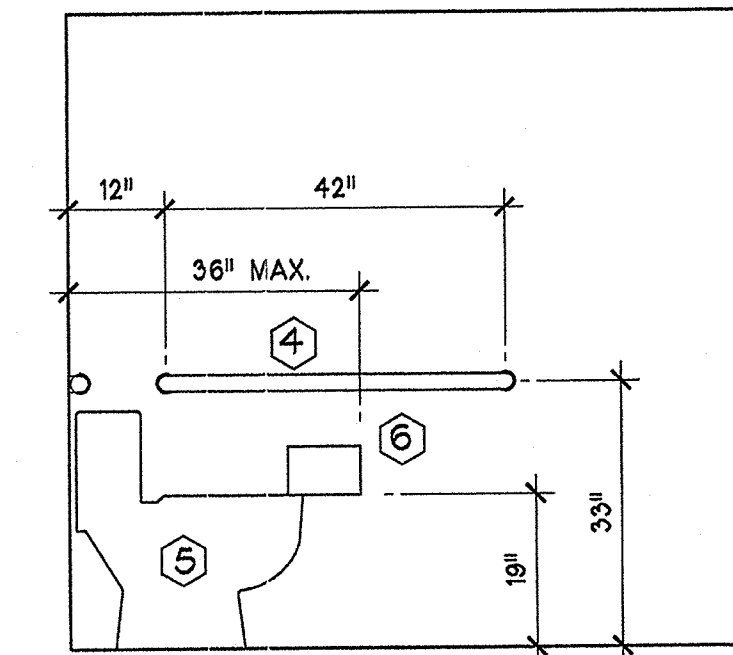
1. THE ARCHITECT SHALL NOT BE HELD RESPONSIBLE FOR WORK NOT IN ACCORDANCE WITH THESE DOCUMENTS OR FOR MISINTERPRETATION OF THE DRAWINGS OR FOR UNSATISFACTORY WORK DONE BY THE CONTRACTOR. IN THE EVENT THAT A PROBLEM DOES ARISE FROM THESE DOCUMENTS, THE ARCHITECT SHOULD BE CONTACTED TO MAKE ADJUSTMENTS OR CLARIFICATION IF NEEDED, PRIOR TO COMMENCEMENT OF WORK.
2. INTERIOR FINISHES SHALL BE CLASS "A" IN EXIT AND EXIT ACCESS AREAS, CLASS "C" IN OTHER AREAS.
3. CONTRACTOR SHALL BE HELD RESPONSIBLE FOR ALL INTERIOR AND EXTERIOR FINISHES, INCLUDING MATERIALS AND INSTALLATION PRACTICES. A GOOD QUALITY PRODUCT WITH REASONABLE UPKEEP REQUIREMENTS IS REQUIRED.
4. THE GENERAL CONTRACTOR SHALL VERIFY AND COORDINATE ALL DIMENSIONS WITH SHOP, ELECTRICAL, MECHANICAL, PLUMBING, AND STRUCTURAL DRAWINGS AS APPLICABLE PRIOR TO START OF CONSTRUCTION.
5. DO NOT SCALE DRAWINGS FOR DIMENSION PURPOSES. IF ANY QUESTIONS ARISE, NOTIFY THE ARCHITECT AT ONCE FOR RESOLUTION PRIOR TO PROCEEDING.

## IMPORTANT NOTICE!!

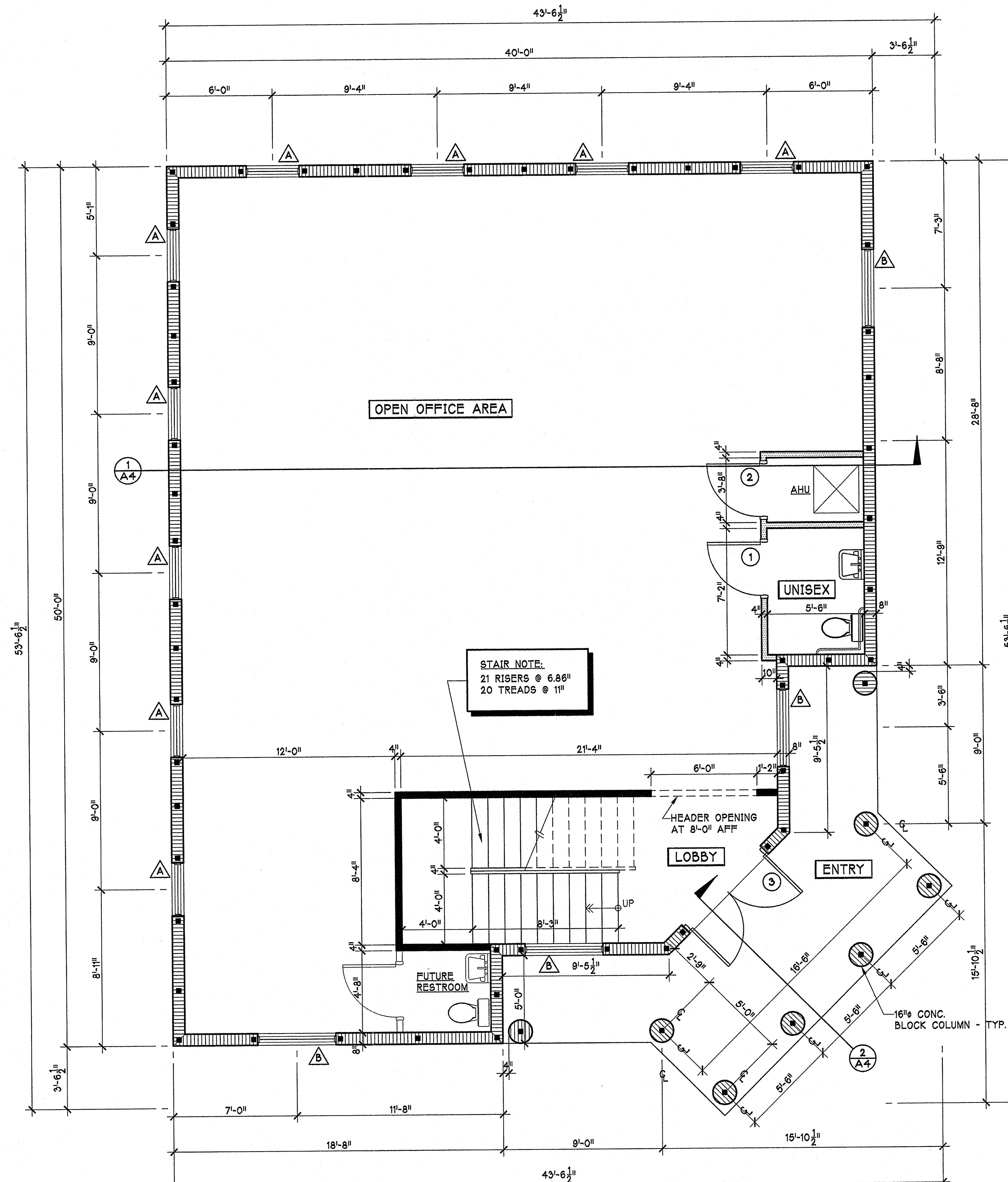
DO NOT SCALE THE DRAWINGS. VERIFY EACH DIMENSION PRIOR TO CONSTRUCTION OF THE FOUNDATION, INSTALLATION OF COLUMNS AND BEAMS AND PRIOR TO ORDERING MATERIAL AND EQUIPMENT. REPORT AND RESOLVE ANY DISCREPANCIES WITH THE DESIGNER BEFORE EFFECTED WORK HAS BEGUN.



**BAR JOIST DRAFTSTOPPING DETAIL**  
N.T.S.



**TYPICAL HANDICAPPED TOILET FIXTURES AND TOILET ACCESSORIES, MOUNTING HEIGHTS, & CLEARANCES**  
N.T.S.



**FIRST FLOOR PLAN**

SCALE: 1/4" = 1'-0"  
OFFICE AREA = 1,563 S.F. PER FLOOR

**STAIR NOTE:**  
21 RISERS @ 6.86"  
20 TREADS @ 11"

### TOILET NOTES:

1. THE HIGHEST OPERABLE PART OF DISPENSERS AND RECEPTACLES SHALL BE NO GREATER THAN 54" ABOVE FINISH FLOOR.
2. MIRRORS SHALL BE 18" X 24" TILT TYPE AND SHALL BE MOUNTED WITH BOTTOM EDGE OF THE REFLECTING SURFACE NO HIGHER THAN 40" ABOVE FINISH FLOOR.
3. LAVATORIES SHALL BE MOUNTED WITH THE RIM OR COUNTER TOP NO HIGHER THAN 34" ABOVE FINISH FLOOR. PROVIDE A CLEARANCE OF AT LEAST 29" ABOVE FINISH FLOOR TO THE BOTTOM OF THE APRON.
4. THE DIAMETER OF THE GRIPPING SURFACE OF THE GRAB BAR SHALL BE 1-1/4" TO 1-1/2". THE GRAB BAR SHALL HAVE A 1-1/2" CLEARANCE FROM THE WALL. THE LENGTH OF THE GRAB BARS ARE AS SHOWN.
5. THE HEIGHT OF HANDICAPPED WATER CLOSETS SHALL BE 17" TO 19" MEASURED TO THE TOP OF THE TOILET SEAT ABOVE FINISH FLOOR AND SHALL HAVE AN 18" CLEARANCE ON EACH SIDE FROM CENTER LINE OF WATER CLOSET.
6. THE TOILET PAPER DISPENSER SHALL BE MOUNTED SO THAT THE DISPENSING HEIGHT OF THE PAPER SHALL HAVE A CLEARANCE OF 19" FROM THE FINISH FLOOR AND THE FURTHERMOST EDGE DOES NOT EXCEED 36" FROM THE "WET" WALL.
7. PROVIDE PROPER BLOCKING IN WALLS FOR ALL WALL HUNG SINKS AND GRAB BARS.
8. PROVIDE ADA COMPLIANT PADDING ON ALL EXPOSED LAVATORY, SINK WASTE AND SUPPLY PIPING.

### SYMBOLS LEGEND

- ▬ - NEW 8" CONC. BLOCK WALL
- ▬ - NEW METAL STUD WALL
- ▬ - 1 HOUR RATED STUD WALL
- - DOOR NUMBERS
- △ - WINDOW TYPES
- ⊗ - BUILDING SECTION

REVISIONS	
DATE	DESCRIPTION

VISLAY ARCHITECTS GROUP, INC.  
625 EAST MERRITT AVENUE, SUITE 700  
MERRITT ISLAND, FLORIDA 32953  
PHONE: (407) 453-4700  
FAX: (407) 453-4608

A NEW  
**2-STORY SHELL BUILDING**  
FOR:  
**PERRONE PROPERTIES**  
MERRITT ISLAND, FLORIDA

COPYRIGHT © STATEMENT

THESE DOCUMENTS AND THEIR CONTENTS ARE THE PROPERTY OF VISLAY ARCHITECTS GROUP, INC. AND ARE ISSUED ONLY FOR THE SPECIFIC PROJECT NOTED ON THESE DOCUMENTS. ANY REVISIONS, REPRODUCTIONS, OR MODIFICATIONS OF THESE DOCUMENTS WITHOUT THE EXPRESS WRITTEN CONSENT OF VAG, INC. IS PROHIBITED BY LAW.

DRAWN	MRB
CHECKED	JRV
DATE	6-26-06
SCALE	AS NOTED
JOB NO.	

SHEET  
**A1**  
2 of 14 SHEETS